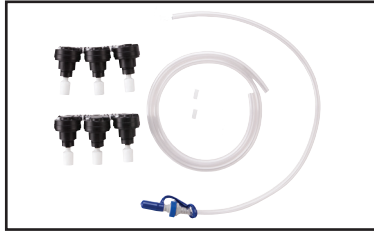
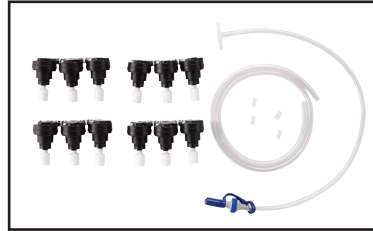


CK600TB4 & CK1200TB4



Part # CK600TB4



Part # CK1200TB4



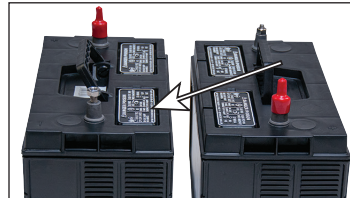
- Always wear personal protective equipment (goggles, gloves, etc.) to protect yourself from sulfuric acid.
- Prior to installing the watering system, inspect the water level in each cell to ensure water is covering the plates inside the cell. If the water level is below the plates, manually fill each cell so the plates are covered.
- Only water after charging.
- Read instructions in entirety before beginning the installation.
- Cut the tubing squarely to ensure a tight fit against the valve barbs and tee piece when connected.

Note: Warming the tubing in warm water will make installation easier.

Operation Instructions:

STEP 1: PREPARE

Carefully remove the battery's existing caps. A flat head screw driver can be used to remove the caps.



STEP 2: INSTALL THE VALVES

Insert the watering system valve string into the vent openings, firmly pressing each valve into each cell so they fit flush with the battery top.



STEP 3: CONNECT THE BATTERIES TOGETHER

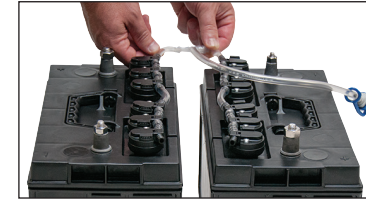
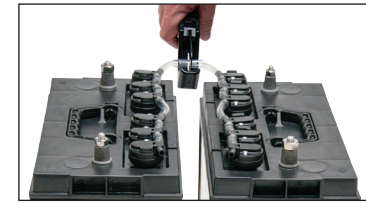
Push the 1/4" tubing onto the valve barb so it is flush with the valve. Attach the tubing to the end valves with enough slack to allow some movement for the tee piece (once the tubing is cut). Avoid crimps in the tubing.



STEP 4: INSTALL THE FILL TUBE

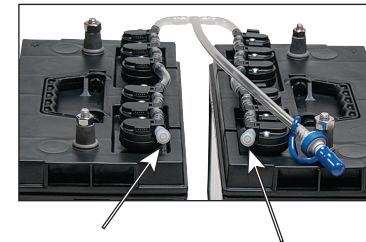
If you have one battery, connect the fill tube to the end valve and go to Step 5. If you have two batteries, leave the same amount of tubing on either side (centered), and cut the tubing squarely for installation of the fill tube.

Insert the fill tube centered between the open tubing ends. Push the 1/4" tubing onto the tee piece so it is flush.



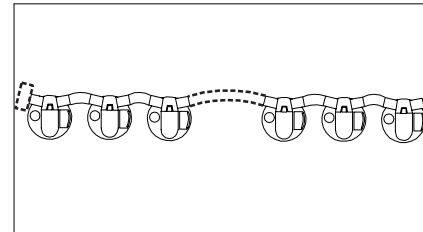
STEP 5: INSTALL END CAPS

Use the end caps to cover the valve barbs on the open ends of the valve strings.

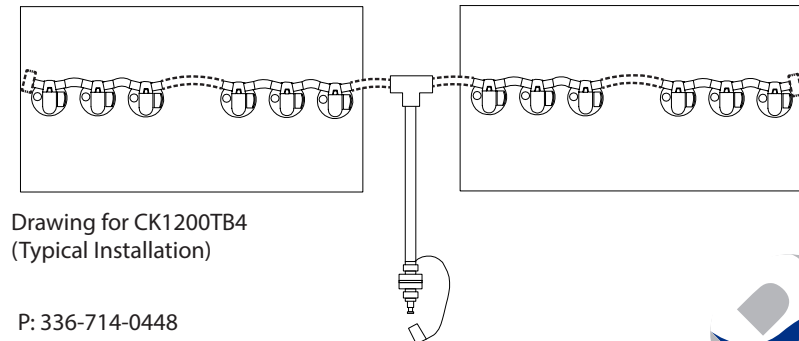


Drawings:

The dotted line indicates where the kit needs to be assembled.



Drawing for CK600TB4
(Typical Installation)



Drawing for CK1200TB4
(Typical Installation)

P: 336-714-0448

F: 336-714-0449

T: 877-522-5431

www.batterywatering.com

CK600TB4_CK1200TB4_INSE_0316

